

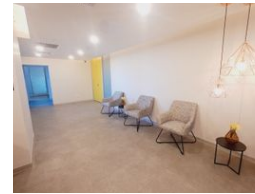


Wendy Worthington
079 017 3022
wendy.w@harcourts.co.za

Contact Harcourts Dunn

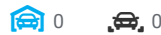
021 8212237

134 Edward Road
Belville
CapeTown
7550



R155 per m²

Gross Monthly Rental R226,858 Excl. VAT



LARGE OPEN PLAN OFFICE TO LET IN PARC DU CAP BUILDING

****NOW AVAILABLE!****

- 24-hour security-controlled entrance
- Spacious lobby upon entering Parc du Cap 2
- Nearby coffee shop
- Backup generator for uninterrupted service

This impressive space is ideally suited for a large call center or insurance company. If you're in search of a spacious office environment equipped with all the essential features, look no further! The layout resembles a horseshoe, featuring two entrances and large windows along the outer wall, providing beautiful views of the gardens and parking area.

Conveniently located in the center of the floor are the male and female restrooms.

This area offers flexibility to accommodate your needs, as it can be subdivided or combined:

- A: 310m²
- B: 371m²
- C: 361m²

Features

Building Name	Parc du Cap
Zoning	Commercial
Sizes	
Floor Size	1,463m ²

