



Jeandre Mostert
083 794 6600
jeandre.mostert@harcourts.co.za



Samantha Fincham
083 571 7201

samantha.fincham@harcourts.co.za

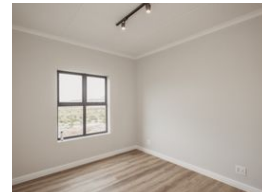
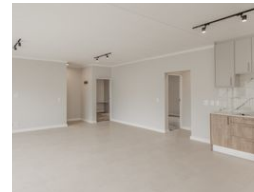
Contact Harcourts Dunn

021 8212237

134 Edward Road
Belville
CapeTown
7550



Web Ref RL40239



R1,949,000

2 1

Monthly Bond Repayment R20,117.35
Calculated over 20 years at 11% with no deposit.

Transfer Costs R72,146.00 **Bond Costs** R32,760.00

These calculations are only a guide. Please ask your conveyancer for exact calculations.

Monthly Levy R987 **Monthly Rates** R800

Spacious 2-Bedroom Apartment For Sale!

Discover this 94m² gem, nestled in the recently launched Knightswood Estate - Sandown.

Perfectly designed for comfort and style, this second-floor apartment offers:

- 2 Generously-sized bedrooms with built-in cupboards.
- A full, neatly-tiled family bathroom.
- Inviting open-plan lounge and dining areas.
- A modern kitchen complete with ample cabinetry, a gas hob, and elegant engineered stone countertops.
- Dedicated, secure parking bay.

Why Knightswood Estate?

Features

| Interior | | Exterior | | Sizes | |
|--------------|----|---------------------|-------|------------|------------------|
| Bedrooms | 2 | Carports / Parkings | 1 | Floor Size | 94m ² |
| Bathrooms | 1 | Security | No | | |
| Kitchens | 1 | Pool | No | | |
| Recep. Rooms | 2 | Views | False | | |
| Furnished | No | | | | |

Extras

Granite Tops Built in Wardrobes 24 Hour Access Gas Hob Under Counter Oven Fibre Secondfloorandabove Security Estate Secure Parking Balcony Open Plan Kitchen Modern

