



Sumari Neethling
083 321 9051
sumari.n@harcourts.co.za

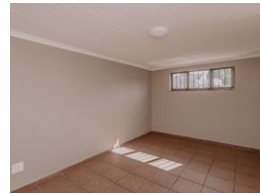
Contact Harcourts Dunn

021 8212237

134 Edward Road
Belville
CapeTown
7550



Web Ref RL38440



R2,780,000

5 2 2

Monthly Bond Repayment R28,694.84
Calculated over 20 years at 11% with no deposit.

Transfer Costs R140,287.00 **Bond Costs** R40,300.00
These calculations are only a guide. Please ask your conveyancer for exact calculations.

Monthly Rates R1,290

Spacious 3 bedroom house with a 2 bedroom flatlet

Welcome to this charming three-bedroom family home, designed for modern living and comfort. Upon entering, you'll be greeted by an inviting open-plan kitchen and dining area, ideal for entertaining and family meals. The kitchen features sleek finishes and ample counter space, leading to a spacious scullery with a back door that opens to a delightful stoep and braai area, perfect for outdoor dining and relaxation.

The home boasts three well-sized bedrooms, each with built-in cupboards, offering plenty of storage space. The full modern bathroom is equipped with a bath, shower, and toilet, catering to the needs of the entire family.

Additional features include a double garage, providing secure parking, and a separate two-bedroom flatlet above the garage, offering its own entrance. This flatlet is an excellent opportunity for...

Features

Pets Allowed Yes

Interior

Bedrooms	5
Bathrooms	2
Kitchens	2
Recep. Rooms	2
Furnished	No

Exterior

Garages	2
Carports / Parkings	3
Security	No
Pool	No
Views	False

Sizes

Floor Size	214m ²
Land Size	669m ²

Extras

Bath, Toilet and Basin Built in Wardrobes Communal Wood Window Aluminium Window Open Plan Waterproofing Tiled Floors Burglar Bars Curtain Rails Double Storey Flatlet Scullery Triple Parking Vinyl Floors Wallpaper

