

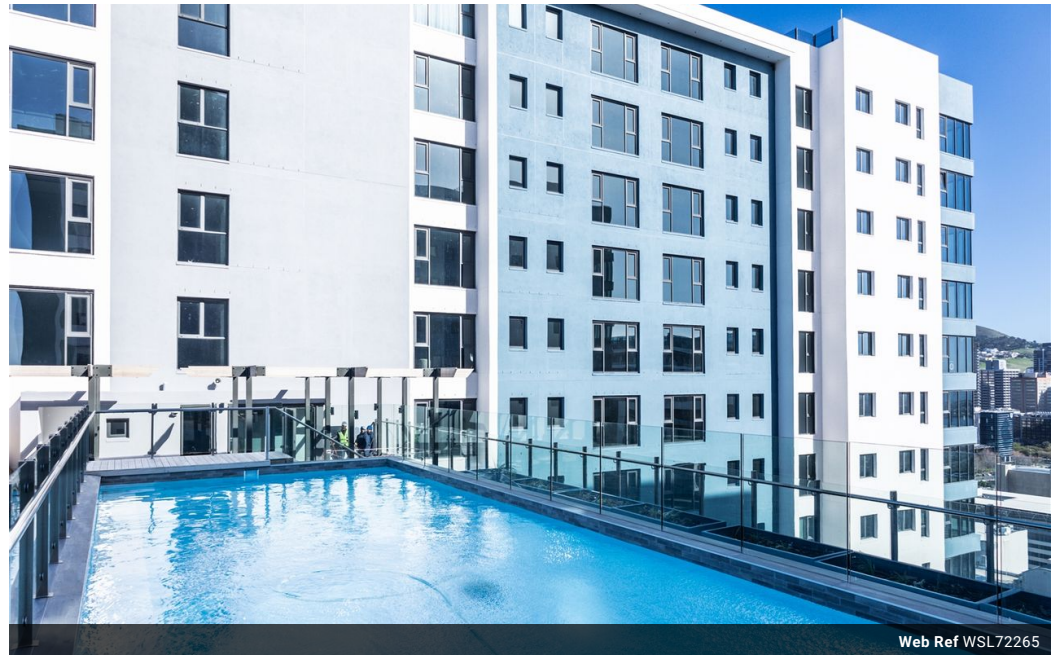


**Theocharis  
Theocharides**  
082 500 2410  
theo.t@harcourts.co.za

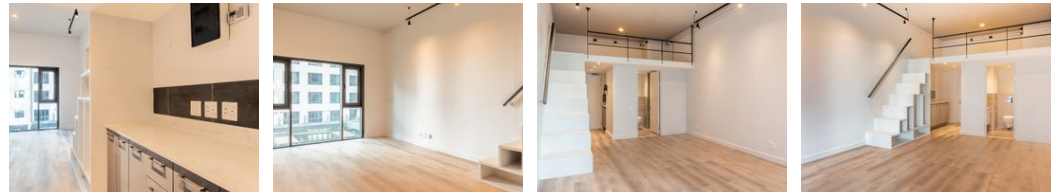
Contact Harcourts Dunn

021 8212237

134 Edward Road  
Belville  
CapeTown  
7550



Web Ref WSL72265



### R2,200,000

**Monthly Bond Repayment** R22,708.14  
Calculated over 20 years at 11% with no deposit.

**Transfer Costs** R89,947.00    **Bond Costs** R34,625.00

These calculations are only a guide. Please ask your conveyancer for exact calculations.



A prime opportunity to invest!

Enjoying fantastic proximity to the city and its surrounds, Harbour Arch's six towers will be located alongside landscaped public spaces.

Occupancy is planned for April 2023.

A choice of stylish studio, one, two and three-bedroom corner apartments are available. Each apartment offers fantastic spatial design, modern styling, and wonderful upscale finishes.

No 1 Harbour Arch offers its residents both public and private entertainment areas. Select the 8th-floor entertainment area which is open to the general public and residents alike, where you will find a north-facing courtyard garden flanked by retail outlets, restaurants, coffee shops, and cocktail bars. Alternatively, gravitate to the 24th-floor viewing deck and garden for the residents of the Tower. The outdoor pool will be located on the 17th floor terrace which is...

### Features

Interior		Exterior		Sizes	
Bedrooms	1	Security	No	Floor Size	35m <sup>2</sup>
Bathrooms	1	Pool	Yes		
Kitchens	1	Views	True		
Furnished	No				

### Extras

Laminated Floors House Style: Executive Unit Style: Highrise Views: Mountain Views: Sea / Ocean Views: Waterfront Locality: Close To Shops Living Area: Open Plan Kitchen: Modern Pool: Communal Land Contour: Flat Condition: New Window/door Frames: Aluminium Water Supply: Town Supply Sewerage: Mains

