

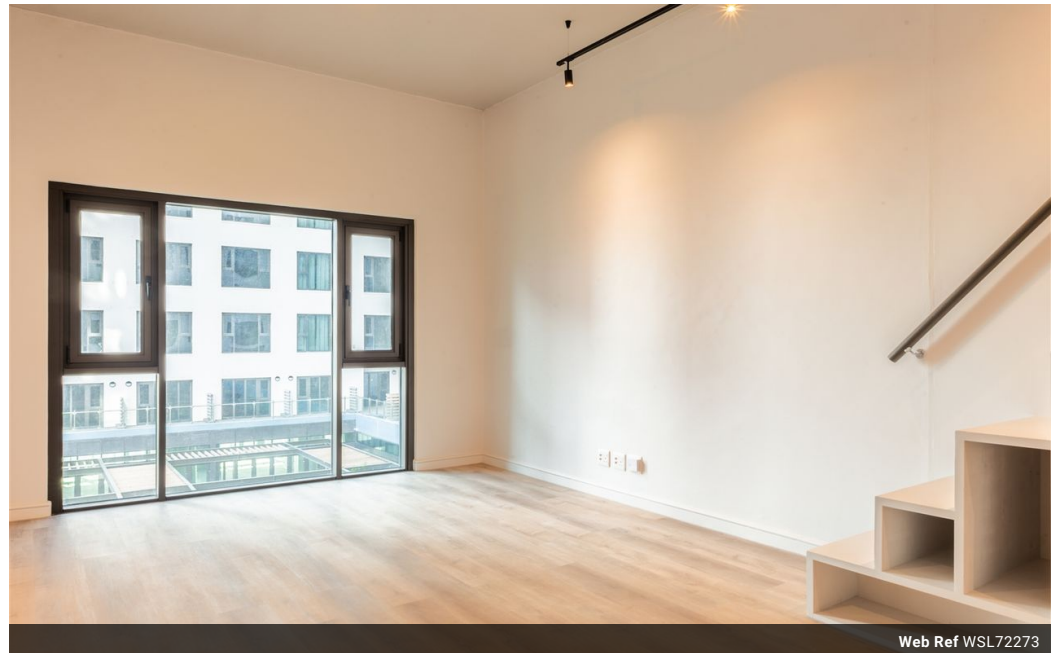


**Theocharis
Theocharides**
082 500 2410
theo.t@harcourts.co.za

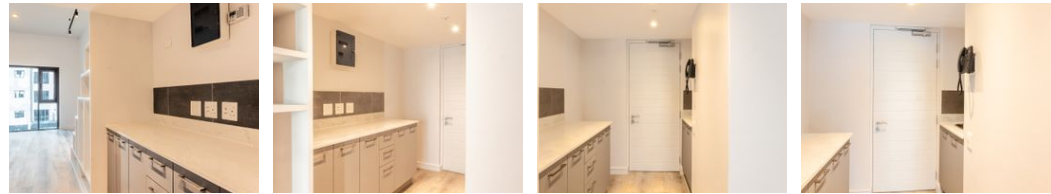
Contact Harcourts Dunn

021 8212237

134 Edward Road
Belville
CapeTown
7550



Web Ref WSL72273

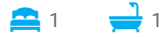


R2,200,000

Monthly Bond Repayment R22,708.14
Calculated over 20 years at 11% with no deposit.

Transfer Costs R89,947.00 **Bond Costs** R34,625.00

These calculations are only a guide. Please ask your conveyancer for exact calculations.



Mixed-use living

Harbour Arch will become Cape Town's largest and most ambitious sustainable mixed-use development. Like Melrose Arch, it will be built on sustainable principles and eco-friendly innovation. Integrated green building initiatives will include refuse recycling, water-saving devices and rainwater harvesting, a centralised district cooling facility and low-energy LED lighting. Within the vibrant pedestrian-friendly Harbour Arch precinct you will find all your daily needs taken care of - restaurants, cocktail bars, shopping, hotels, banking, medical services, health clubs, entertainment and much more.

Features

Interior		Exterior		Sizes	
Bedrooms	1	Security	No	Floor Size	35m ²
Bathrooms	1	Pool	Yes		
Kitchens	1	Views	True		
Furnished	No				

Extras

Laminated Floors House Style: Executive Unit Style: Highrise Views: Mountain Views: Sea / Ocean Views: Waterfront Locality: Close To Shops Living Area: Open Plan Kitchen: Modern Pool: Communal Land Contour: Flat Window/door Frames: Aluminium Water Supply: Town Supply Sewerage: Mains

