

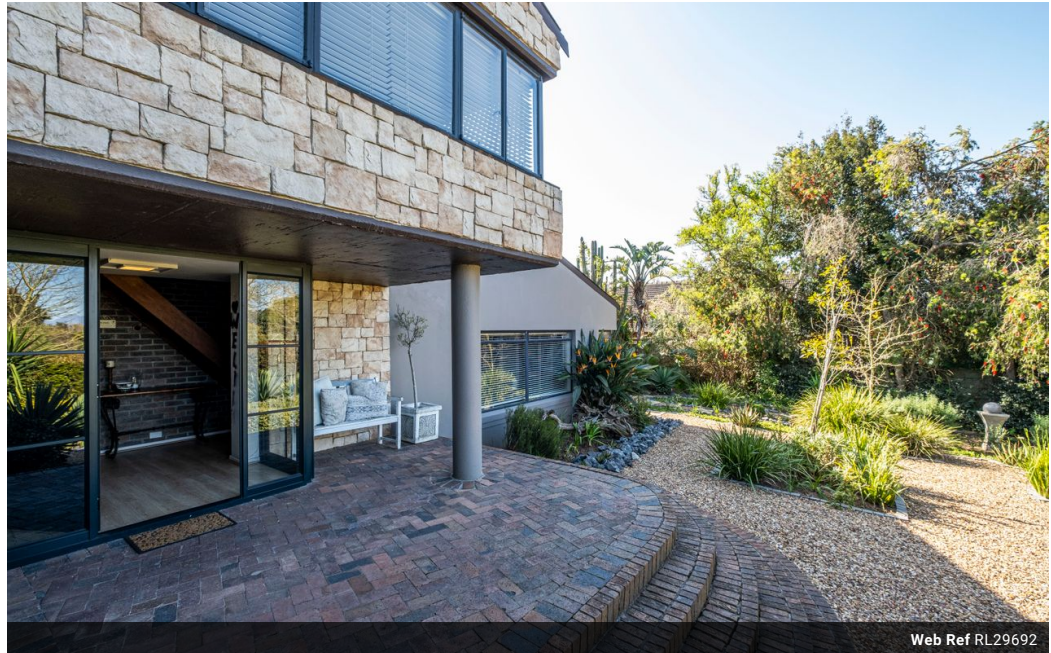


Loraine Roux
082 331 0744
loraine.roux@harcourts.co.za

Contact Harcourts Dunn

021 8212237

134 Edward Road
Belville
CapeTown
7550



Web Ref RL29692



R4,999,000

4 3

Monthly Bond Repayment R51,599.10
Calculated over 20 years at 11% with no deposit.

Transfer Costs R402,235.00 **Bond Costs** R61,035.00
These calculations are only a guide. Please ask your conveyancer for exact calculations.

Monthly Rates R1,600

Charming Family Haven: A Perfect Blend of Comfort and Rustic Industrial Aesthetic

This striking family home seamlessly blends modern comforts with a rustic industrial aesthetic, featuring exposed brick, wood, and stone accents that create warmth and style. The angular design and earthy materials lend the home a distinctive architectural appeal.

Upon entering, you're welcomed by an exposed wood staircase that sets the tone for the industrial charm throughout the home. The staircase leads to a loft-style pajama lounge or TV room, offering breathtaking mountain vistas.

The sunken living room, anchored by a biofuel fireplace, provides a cozy, inviting atmosphere, ideal for late-night conversations. This area connects seamlessly to the outdoors through sliding doors that open onto the low-maintenance, yet alluring garden and the gunite pool, with a modern cleaning system.

Featured in the living room is a...

Features

Pets Allowed		Exterior		Sizes	
	Yes	Carports / Parkings	4	Floor Size	345m ²
Interior		Security	Yes	Land Size	1,483m ²
Bedrooms	4	Pool	Yes		
Bathrooms	3	Views	True		
Kitchens	1				
Recep. Rooms	4				
Studies	1				
Furnished	No				

