



Anneli De Villiers
082 490 9091
anneli.devilliers@harcourts.co.za

Contact Harcourts Dunn

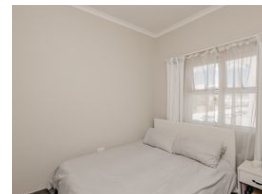
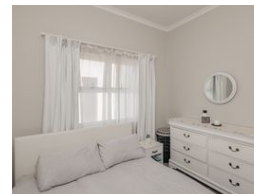
021 8212237

134 Edward Road
Belville
CapeTown
7550



SOLE MANDATE

Web Ref RL39096



R900,000

Monthly Bond Repayment R9,289.70
Calculated over 20 years at 11% with no deposit.

Transfer Costs R28,244.00 **Bond Costs** R21,450.00
These calculations are only a guide. Please ask your conveyancer for exact calculations.

1 1

Monthly Levy R475 **Monthly Rates** R265 **Special Levy** R261

Spacious One Bedroom For Sale

As you enter this spacious one bedroom unit situated on the corner of the 3rd floor, you will love the space, the light and the homely feel of this unit.
The bedroom can comfortably accommodate a queen size bed with ample built in cupboard space.
The open plan kitchen, dining living area is functional and homely. The kitchen offers ample cupboard space with a electric hob and oven.
You will feel right at home in this beautiful complex with landscaped gardens.
Hawequa Estate forms part of the Mooiberge Complex in Haasendal Kuilsrivier and the urban lifestyle this new suburb offers. It is situated close to the Haasendal Gables Shopping Mall, a stone throw away from Kuilsrivier Golf course and easy access to the N1 or N2 leading to either Cape Town International Airport, CBD or Somerset West / Stellenbosch.
Contact...

Features

Interior		Exterior		Sizes	
Bedrooms	1	Carports / Parkings	1	Floor Size	41m ²
Bathrooms	1	Security	Yes		
Kitchens	1	Pool	No		
Recep. Rooms	1	Views	True		
Furnished	No				

